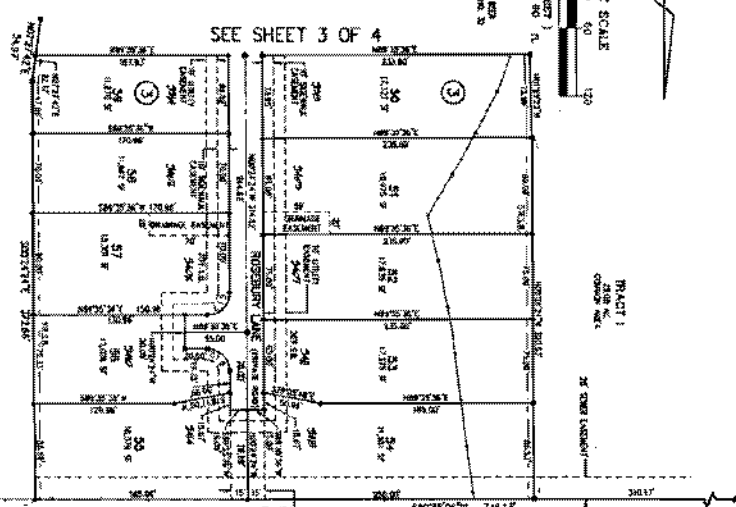


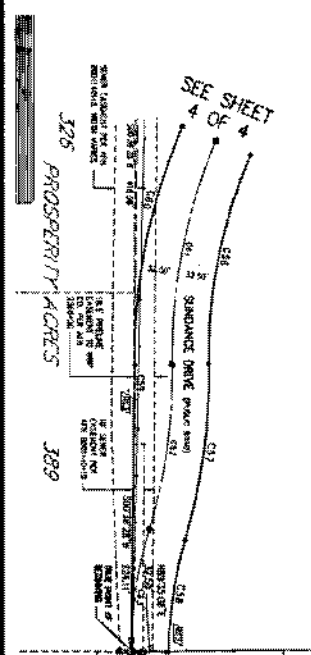
SEE PLANS
 FOR THE
 LOCATION OF
 THE
 PROPERTY
 AS
 SHOWN
 ON
 THIS
 PLAN



SEE SHEET 3 OF 4

CURVE TABLE

STATION	CHORD BEARING	CHORD LENGTH	TANGENT DISTANCE	CHORD CURVE	CHORD BEARING	CHORD LENGTH	TANGENT DISTANCE	CHORD CURVE
1+00.00	S 89.54° E	100.00	100.00	100.00	S 89.54° E	100.00	100.00	100.00
1+05.00	S 89.54° E	105.00	105.00	105.00	S 89.54° E	105.00	105.00	105.00
1+10.00	S 89.54° E	110.00	110.00	110.00	S 89.54° E	110.00	110.00	110.00
1+15.00	S 89.54° E	115.00	115.00	115.00	S 89.54° E	115.00	115.00	115.00
1+20.00	S 89.54° E	120.00	120.00	120.00	S 89.54° E	120.00	120.00	120.00
1+25.00	S 89.54° E	125.00	125.00	125.00	S 89.54° E	125.00	125.00	125.00
1+30.00	S 89.54° E	130.00	130.00	130.00	S 89.54° E	130.00	130.00	130.00
1+35.00	S 89.54° E	135.00	135.00	135.00	S 89.54° E	135.00	135.00	135.00
1+40.00	S 89.54° E	140.00	140.00	140.00	S 89.54° E	140.00	140.00	140.00
1+45.00	S 89.54° E	145.00	145.00	145.00	S 89.54° E	145.00	145.00	145.00
1+50.00	S 89.54° E	150.00	150.00	150.00	S 89.54° E	150.00	150.00	150.00
1+55.00	S 89.54° E	155.00	155.00	155.00	S 89.54° E	155.00	155.00	155.00
1+60.00	S 89.54° E	160.00	160.00	160.00	S 89.54° E	160.00	160.00	160.00
1+65.00	S 89.54° E	165.00	165.00	165.00	S 89.54° E	165.00	165.00	165.00
1+70.00	S 89.54° E	170.00	170.00	170.00	S 89.54° E	170.00	170.00	170.00
1+75.00	S 89.54° E	175.00	175.00	175.00	S 89.54° E	175.00	175.00	175.00
1+80.00	S 89.54° E	180.00	180.00	180.00	S 89.54° E	180.00	180.00	180.00
1+85.00	S 89.54° E	185.00	185.00	185.00	S 89.54° E	185.00	185.00	185.00
1+90.00	S 89.54° E	190.00	190.00	190.00	S 89.54° E	190.00	190.00	190.00
1+95.00	S 89.54° E	195.00	195.00	195.00	S 89.54° E	195.00	195.00	195.00
2+00.00	S 89.54° E	200.00	200.00	200.00	S 89.54° E	200.00	200.00	200.00



SEE SHEET 4 OF 4

Condense Ridge
 3 of 3

7/25/2010

FOR THE RECORD, THE
 RECORDING OFFICE
 HAS FILED THIS
 INSTRUMENT
 NUMBER 11 AND 12 OF 2010.

LENDING:
 - SET 1/2" REBAR WITH
 CHANGES TO PLAN
 - SET 1/2" REBAR WITH
 CHANGES TO PLAN
 - SET 1/2" REBAR WITH
 CHANGES TO PLAN
 - SET 1/2" REBAR WITH
 CHANGES TO PLAN

ENGINEERING FENCE:
 B.B. BIRD
 F.A. FROST
 K.S. KAMM
 457 N. AUBURN TRL. S.W.

10
 11
 12
 30
 31
 32

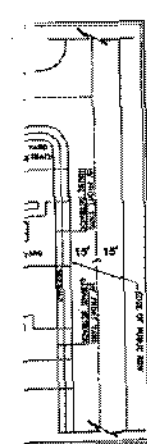
NO.	DESCRIPTION
1	...
2	...
3	...
4	...
5	...
6	...
7	...
8	...
9	...
10	...
11	...
12	...
13	...
14	...
15	...
16	...
17	...
18	...
19	...
20	...
21	...
22	...
23	...
24	...
25	...
26	...
27	...
28	...
29	...
30	...
31	...
32	...

CURVE TABLE

STATION	CHORD BEARING	CHORD DISTANCE	CHORD BEARING	CHORD DISTANCE	CHORD BEARING	CHORD DISTANCE	CHORD BEARING	CHORD DISTANCE
1+00	N 89° 59' 59" E	100.00	S 89° 59' 59" W	100.00	N 89° 59' 59" E	100.00	S 89° 59' 59" W	100.00
2+00	N 89° 59' 59" E	200.00	S 89° 59' 59" W	200.00	N 89° 59' 59" E	200.00	S 89° 59' 59" W	200.00
3+00	N 89° 59' 59" E	300.00	S 89° 59' 59" W	300.00	N 89° 59' 59" E	300.00	S 89° 59' 59" W	300.00
4+00	N 89° 59' 59" E	400.00	S 89° 59' 59" W	400.00	N 89° 59' 59" E	400.00	S 89° 59' 59" W	400.00
5+00	N 89° 59' 59" E	500.00	S 89° 59' 59" W	500.00	N 89° 59' 59" E	500.00	S 89° 59' 59" W	500.00
6+00	N 89° 59' 59" E	600.00	S 89° 59' 59" W	600.00	N 89° 59' 59" E	600.00	S 89° 59' 59" W	600.00
7+00	N 89° 59' 59" E	700.00	S 89° 59' 59" W	700.00	N 89° 59' 59" E	700.00	S 89° 59' 59" W	700.00
8+00	N 89° 59' 59" E	800.00	S 89° 59' 59" W	800.00	N 89° 59' 59" E	800.00	S 89° 59' 59" W	800.00
9+00	N 89° 59' 59" E	900.00	S 89° 59' 59" W	900.00	N 89° 59' 59" E	900.00	S 89° 59' 59" W	900.00
10+00	N 89° 59' 59" E	1000.00	S 89° 59' 59" W	1000.00	N 89° 59' 59" E	1000.00	S 89° 59' 59" W	1000.00

RADIAL TABLE

STATION	CHORD BEARING	CHORD DISTANCE	CHORD BEARING	CHORD DISTANCE	CHORD BEARING	CHORD DISTANCE	CHORD BEARING	CHORD DISTANCE
1+00	N 89° 59' 59" E	100.00	S 89° 59' 59" W	100.00	N 89° 59' 59" E	100.00	S 89° 59' 59" W	100.00
2+00	N 89° 59' 59" E	200.00	S 89° 59' 59" W	200.00	N 89° 59' 59" E	200.00	S 89° 59' 59" W	200.00
3+00	N 89° 59' 59" E	300.00	S 89° 59' 59" W	300.00	N 89° 59' 59" E	300.00	S 89° 59' 59" W	300.00
4+00	N 89° 59' 59" E	400.00	S 89° 59' 59" W	400.00	N 89° 59' 59" E	400.00	S 89° 59' 59" W	400.00
5+00	N 89° 59' 59" E	500.00	S 89° 59' 59" W	500.00	N 89° 59' 59" E	500.00	S 89° 59' 59" W	500.00
6+00	N 89° 59' 59" E	600.00	S 89° 59' 59" W	600.00	N 89° 59' 59" E	600.00	S 89° 59' 59" W	600.00
7+00	N 89° 59' 59" E	700.00	S 89° 59' 59" W	700.00	N 89° 59' 59" E	700.00	S 89° 59' 59" W	700.00
8+00	N 89° 59' 59" E	800.00	S 89° 59' 59" W	800.00	N 89° 59' 59" E	800.00	S 89° 59' 59" W	800.00
9+00	N 89° 59' 59" E	900.00	S 89° 59' 59" W	900.00	N 89° 59' 59" E	900.00	S 89° 59' 59" W	900.00
10+00	N 89° 59' 59" E	1000.00	S 89° 59' 59" W	1000.00	N 89° 59' 59" E	1000.00	S 89° 59' 59" W	1000.00



*Pondexter
Pledge
1st
Add*

